



## **AMI Software Utility User Guide**

# **Aptio 5.x DMIEDIT GUI User Guide**

**Document Revision 1.02**

**August 3, 2017**



Confidential, NDA Required  
Copyright © 2017

American Megatrends, Inc.  
5555 Oakbrook Parkway  
Suite 200  
Norcross, GA 30093 (USA)

All Rights Reserved  
Property of American Megatrends, Inc.

# Legal

## Disclaimer

This publication contains proprietary information which is protected by copyright. No part of this publication may be reproduced, transcribed, stored in a retrieval system, translated into any language or computer language, or transmitted in any form whatsoever without the prior written consent of the publisher, American Megatrends, Inc. American Megatrends, Inc. retains the right to update, change, modify this publication at any time, without notice.

## For Additional Information

Call American Megatrends, Inc. at 1-800-828-9264 for additional information.

## Limitations of Liability

In no event shall American Megatrends be held liable for any loss, expenses, or damages of any kind whatsoever, whether direct, indirect, incidental, or consequential, arising from the design or use of this product or the support materials provided with the product.

## Limited Warranty

No warranties are made, either expressed or implied, with regard to the contents of this work, its merchantability, or fitness for a particular use. American Megatrends assumes no responsibility for errors and omissions or for the uses made of the material contained herein or reader decisions based on such use.

## Trademark and Copyright Acknowledgments

Copyright © 2017 American Megatrends, Inc. All Rights Reserved.

American Megatrends, Inc.  
5555 Oakbrook Parkway  
Suite 200  
Norcross, GA 30093 (USA)

All product names used in this publication are for identification purposes only and are trademarks of their respective companies.

## Table of Contents

<b>Document Information .....</b>	<b>4</b>
Purpose.....	4
Audience.....	4
Change History .....	4
<b>Introduction.....</b>	<b>5</b>
Overview.....	5
Requirements .....	5
Supported Operation System .....	5
DMIEdit for Windows NT/ 2000/ XP/ PE/ Vista/ 7/ 8/ 10: .....	5
Firmware Requirements .....	5
Operating System DLL/Driver Requirements.....	5
Getting Start .....	6
Installation .....	6
Main Window .....	6
Menu Bar .....	6
File Drop-down Menu Options .....	7
View Drop-down Menu Options.....	8
Undo drop-down menu options. ....	8
About .....	9
Toolbar.....	9
Type Frame .....	10
Info Frame .....	11
Status Bar.....	11
Functions .....	12
Browsing SMBIOS Information .....	12
Saving SMBIOS Information to File .....	12
Saving All SMBIOS Information to File .....	13
Updating SMBIOS Type .....	13
Updating All SMBIOS Types .....	16
Undoing Current Type and Undoing All .....	17
<b>FAQ.....</b>	<b>18</b>
Windows requires a digitally signed driver .....	18

---

## Document Information

### Purpose

This document provides information for using the AptioV DmiEdit tools to update the SMBIOS.

### Audience

Generic BIOS Engineers, OEM Engineers, and Aptio Customers.

### Change History

Date	Revision	Description
2014-01-28	1.00	Initial document created and update content to the latest released of DmiEdit.
2017-02-21	1.01	Add Windows 10 support into OS list.
2017-08-03	1.02	Add answer for Windows digitally signed driver.

---

## Introduction

### Overview

**D**MIEEdit stands for Desktop Management Interface Edit. It allows users to modify strings associated with SMBIOS tables. This utility works with Aptio firmware with SMBIOS support.

Users can modify the following SMBIOS tables with DMIEEdit:

- Bios Information (Type 0)
- System (Type 1)
- Base Board (Type 2)
- Chassis (Type 3)
- Processor Information (Type 4)
- OEM String (Type 11)
- System Configuration Options (Type 12)
- Portable Battery (Type 22)
- System Power Supply (Type 39)

**Note:** The System Firmware must support the SMBIOS specification.

### Requirements

#### Supported Operation System

##### **DMIEEdit for Windows NT/ 2000/ XP/ PE/ Vista/ 7/ 8/ 10:**

DMIEDIT is supported in Windows NT platform series. It requires the Windows NT platform driver.

---

#### Firmware Requirements

DMI Editor (Desktop Management Interface Edit) program requires that the host system Firmware is an AMI Aptio V and above.

---

#### Operating System DLL/Driver Requirements

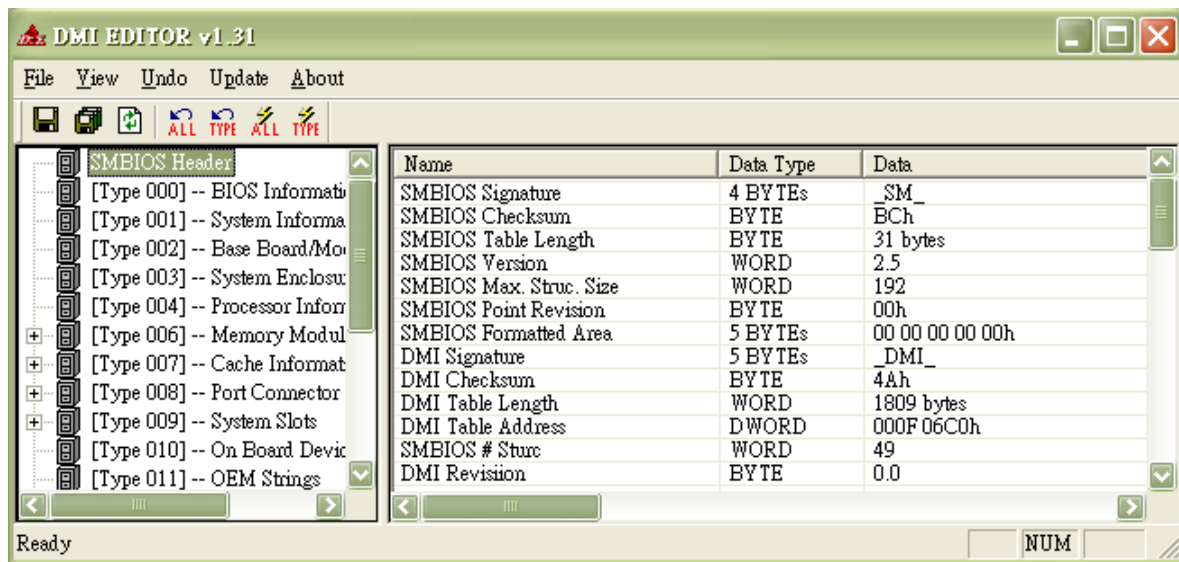
amifldr32.sys	Driver for Microsoft® Windows® 32-Bit Operating System
amifldr64.sys	Driver for Microsoft® Windows® 64-Bit Operating System

## Getting Start

### Installation

Copy **DMIEDIT.EXE** and **amifldr.sys** to any storage location accessible by the host system and then double-click **DMIEDIT** icon or type **DMIEDIT** in command prompt to run. Remember that these four files MUST be in the same directory.

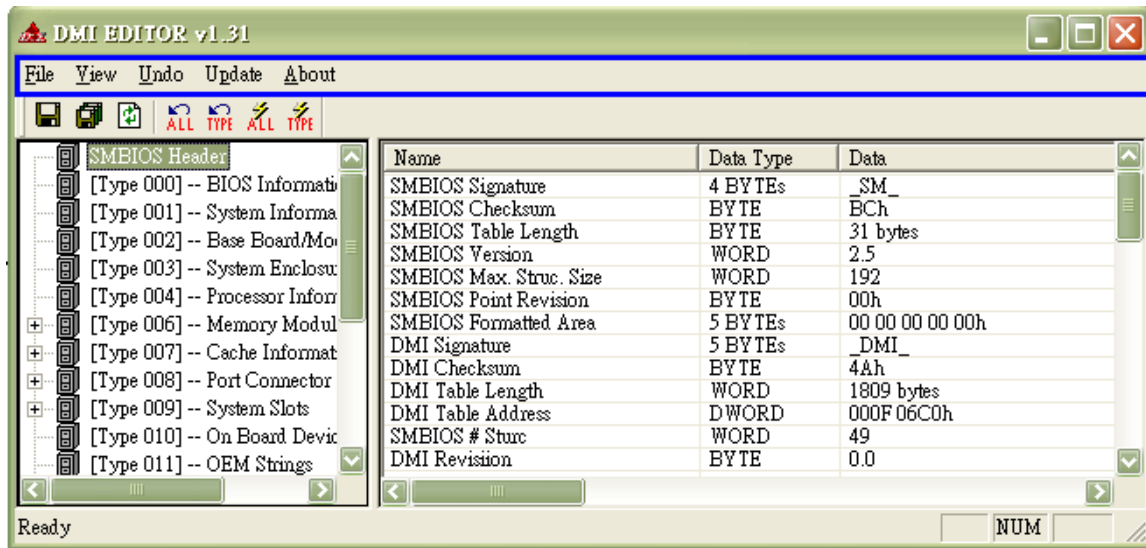
### Main Window



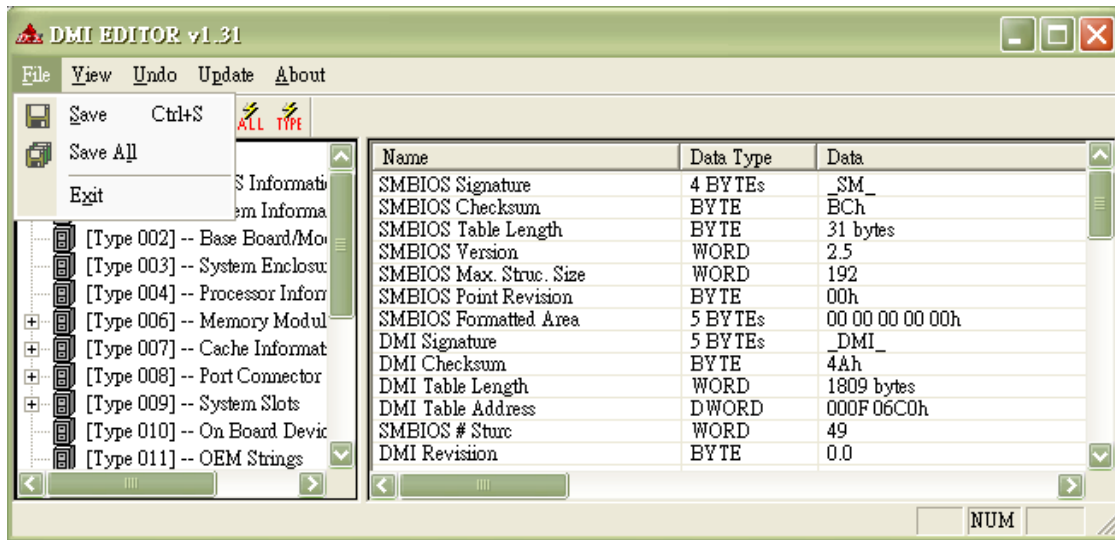
### Menu Bar

The Menu bar is located at the top of the DMI Editor window. The Menu bar contains the following:

- File drop-down menu
- View drop-down menu
- Undo drop-down menu
- Update drop-down menu
- About

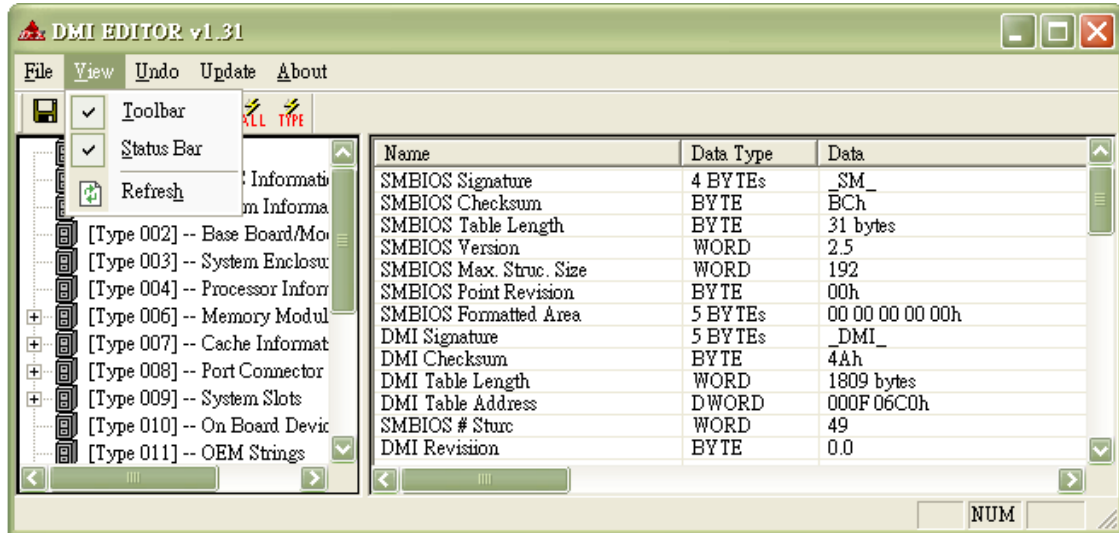


## File Drop-down Menu Options



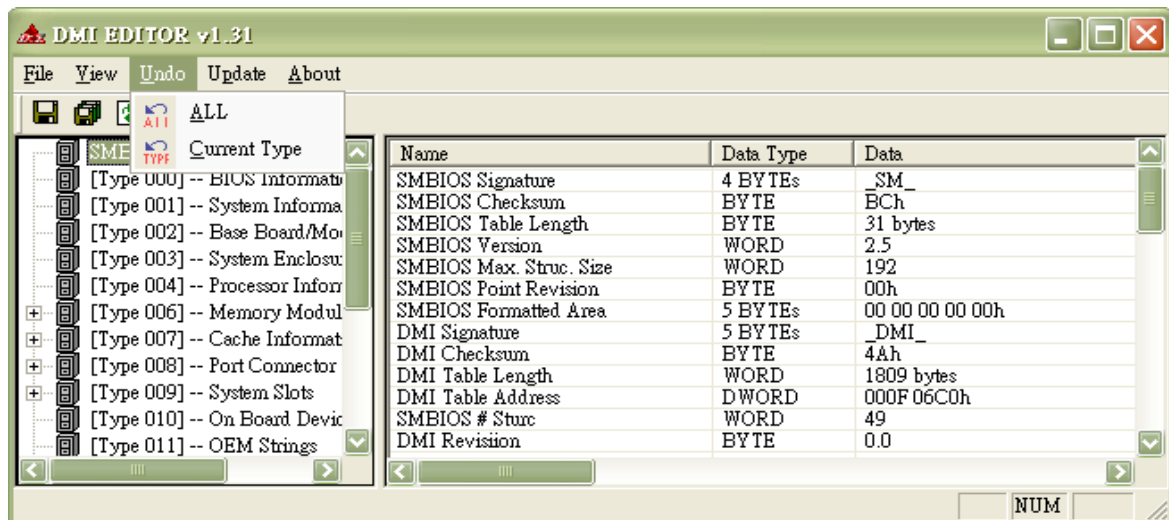
File Menu Item List	
Name	Description
Save	Save current type information to specific path/filename.
Save All	Save all type information to specific path/filename.
Exit	Quit program.

## View Drop-down Menu Options



View Menu Item List	
Name	Description
Toolbar	Display or hide the <i>Toolbar</i> . The <i>Toolbar</i> is displayed under the <i>Menu bar</i> .
Status Bar	Display or hide the <i>Status Bar</i> . The <i>Status Bar</i> is at the bottom of the DMI Editor window.
Refresh	Reload all SMBIOS information from actual BIOS ROM.

## Undo drop-down menu options.

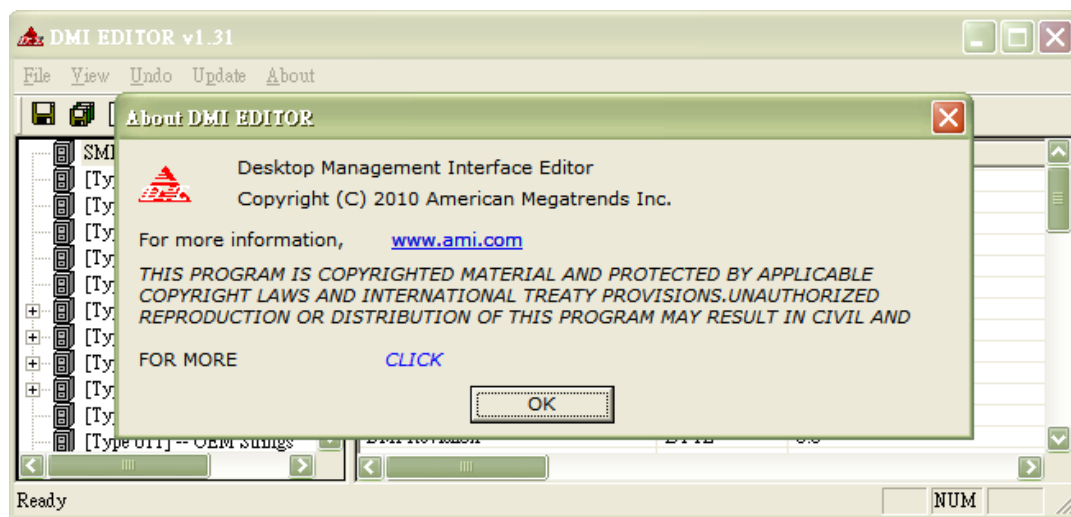




Undo menu item list	
Name	Description
All	Write all SMBIOS information to actual BIOS ROM.
Current Type	Write current type information to actual BIOS ROM.

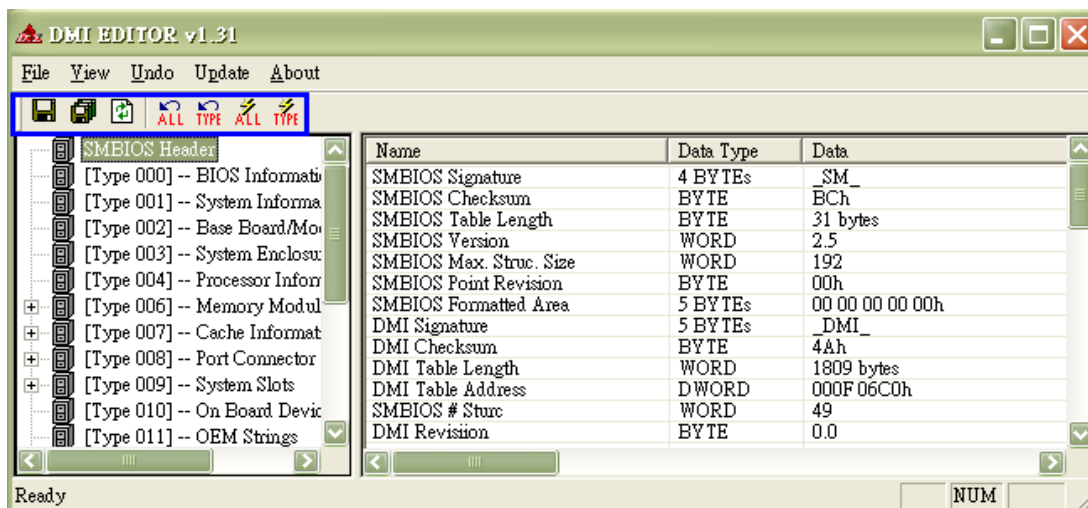
## About

The *About* menu is used to display DMIEdit copyright information.










## Toolbar

The toolbar is located under the menu bar.

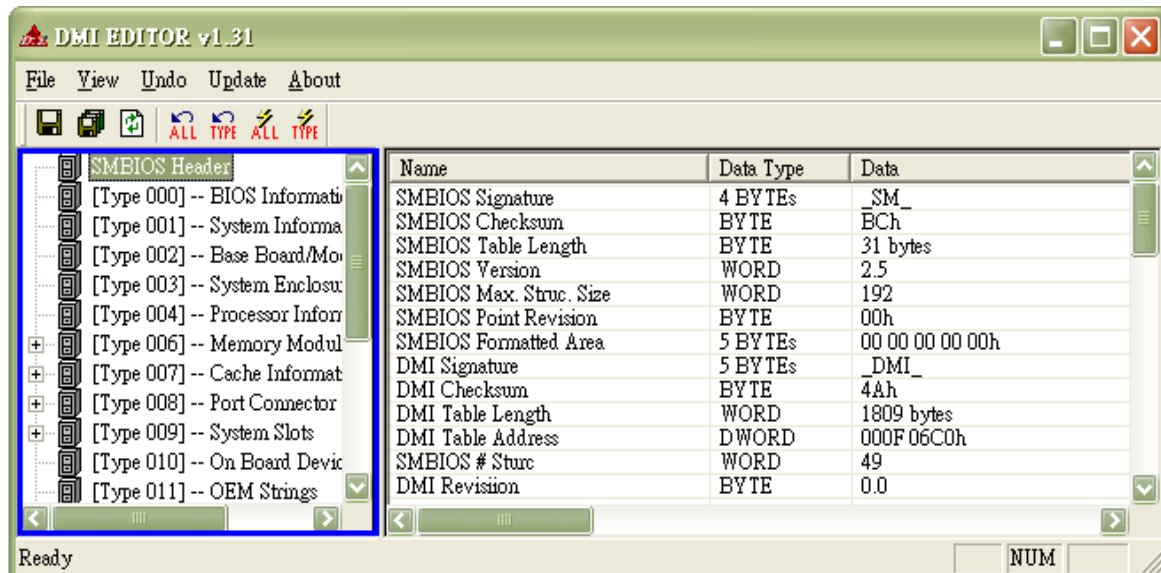


There are a number of *Toolbar* icons. These icons allow you easy access to some standard tools used in the DMI Editor. The following table describes the *Toolbar* icons in detail.

Toolbar icon item list	
Icon	Description
	Save current type information to specific path/filename.
	Save all type information to specific path/filename.
	Reload all SMBIOS information from actual BIOS ROM.
	Reload all SMBIOS information from buffer.
	Reload current type information from buffer.
	Write all SMBIOS information to actual BIOS ROM.
	Write current type information to actual BIOS ROM.

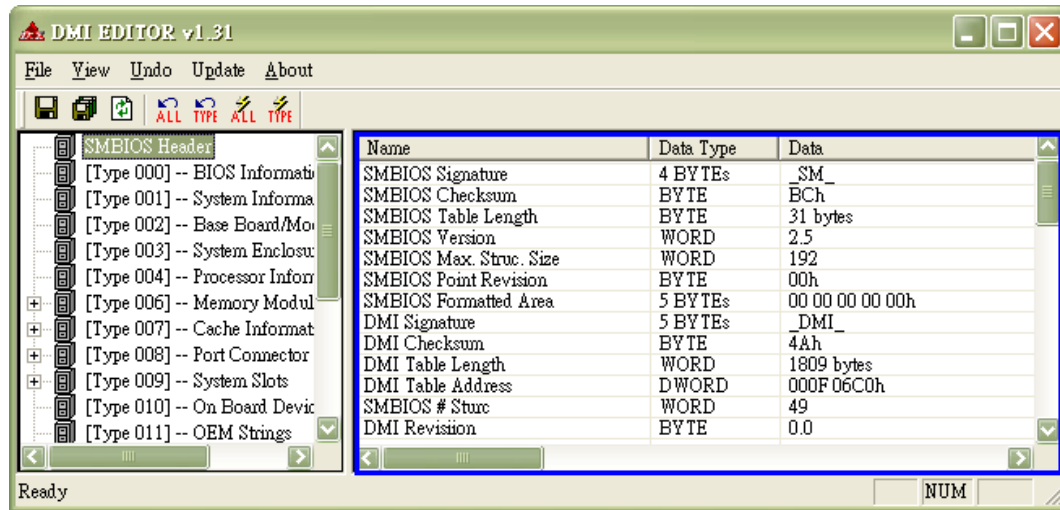
## Type Frame

This frame is located under the *Menu Bar* and the *Toolbar*. It displays the identifiable SMBIOS structure types. If a type is unidentifiable, it will display as “[Type XXX] – Unknown Type”. Scroll down to see more types.



## Info Frame

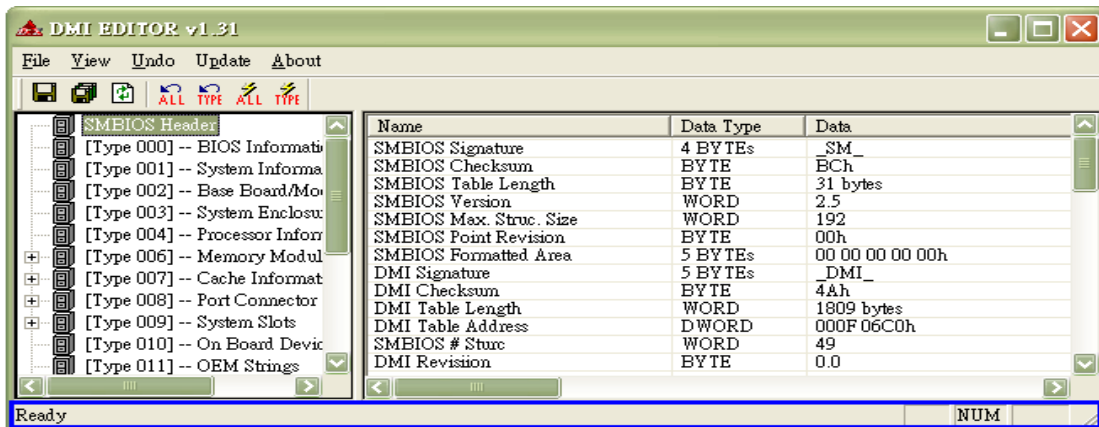
This frame is located under the *Menu Bar* and the *Toolbar*. It displays the current type's information. Scroll down to see more information.



## Status Bar

The *Status bar* is located under the *Type Frame* and the *Info Frame*. The left area of the *Status Bar* describes actions of menu items as you use the arrow keys to navigate through menus. The right area of the *Status Bar* indicates if any of the following keys are latched:

Item	Description
CAP	The <Caps Lock> key is latched down.
NUM	The <Num Lock> key is latched down.
SCRL	The <Scroll Lock> key is latched down.




## Functions

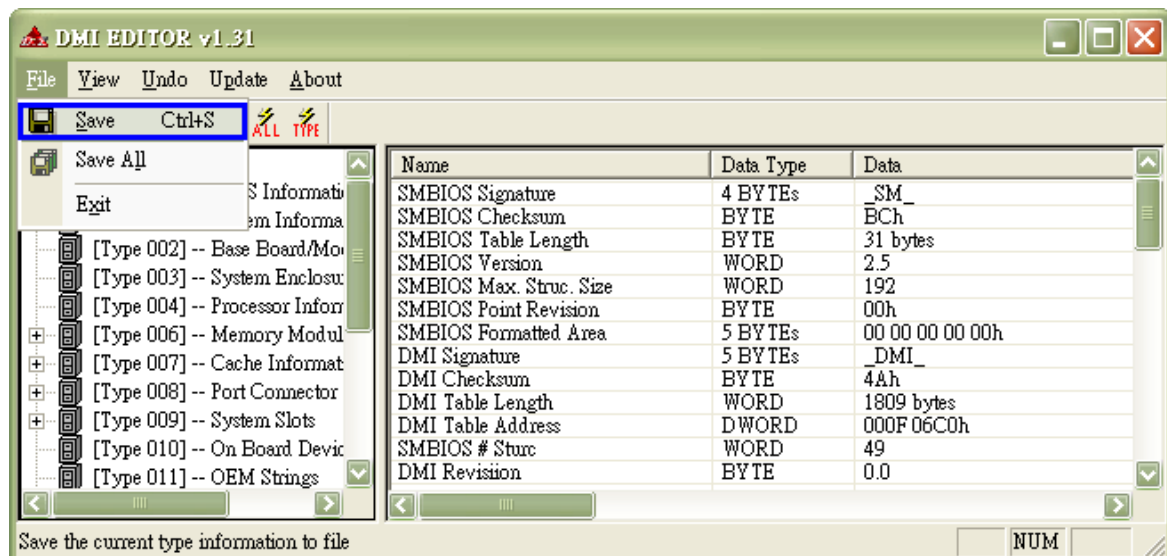
To use DMIEdit, users can double-click the executable file icon to open Main Window. For non-AMIBIOS system, **Undo** and **Update** menus will be hidden.

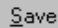
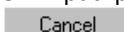
## Browsing SMBIOS Information

Choose a type with a single-click on *Type Frame* and then the related information will be displayed at *Info Frame* immediately. Drop the scroll bars to see more types and information.

## Saving SMBIOS Information to File

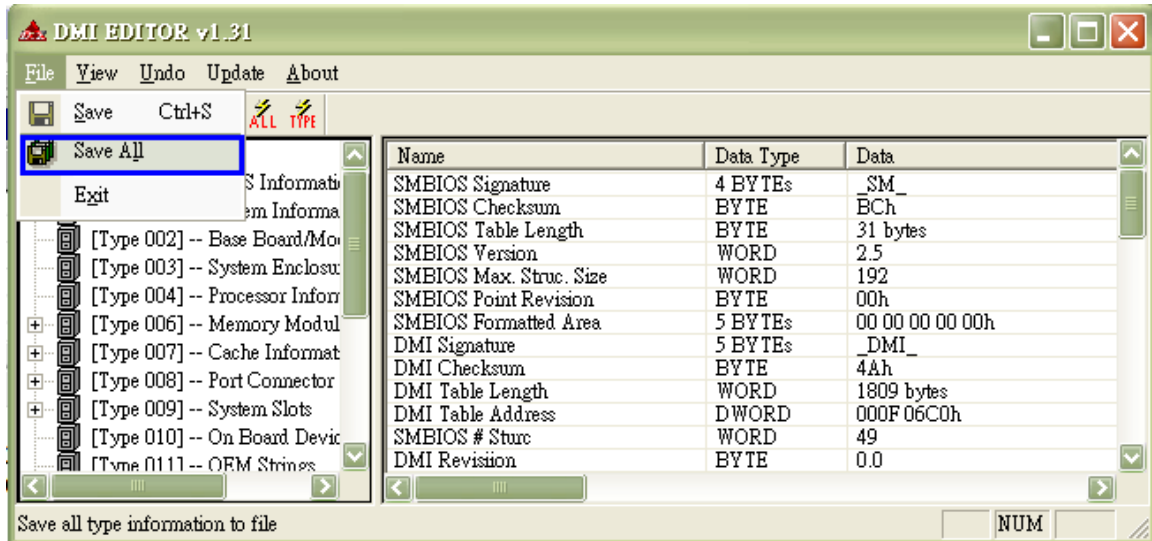
1. Choose a type which you do like to save in the *Type Frame*.
2. Open *File* drop-down menu and select *Save* item, or click  icon on *Toolbar*.



3. Input path/file name in dialog box and press  to get information file or press  to ignore the function.

## Saving All SMBIOS Information to File

1. Open the *File* drop-down menu and select *Save All* item or click  icon on *Toolbar*.

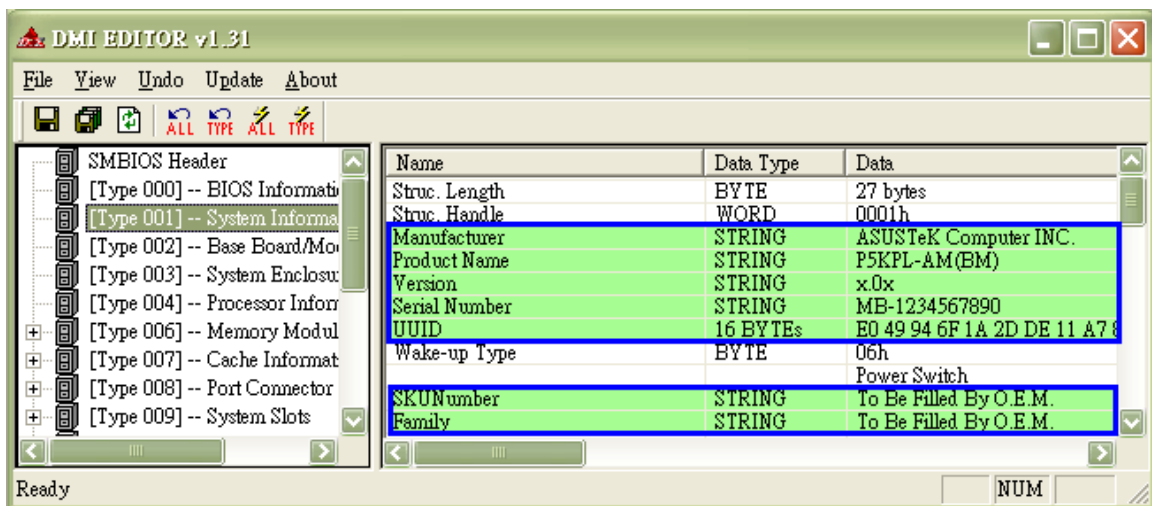


2. Input path/file name on dialog box and press <Save> to get information file or press <Cancel> to ignore the function. The dialog box is same as [above](#).

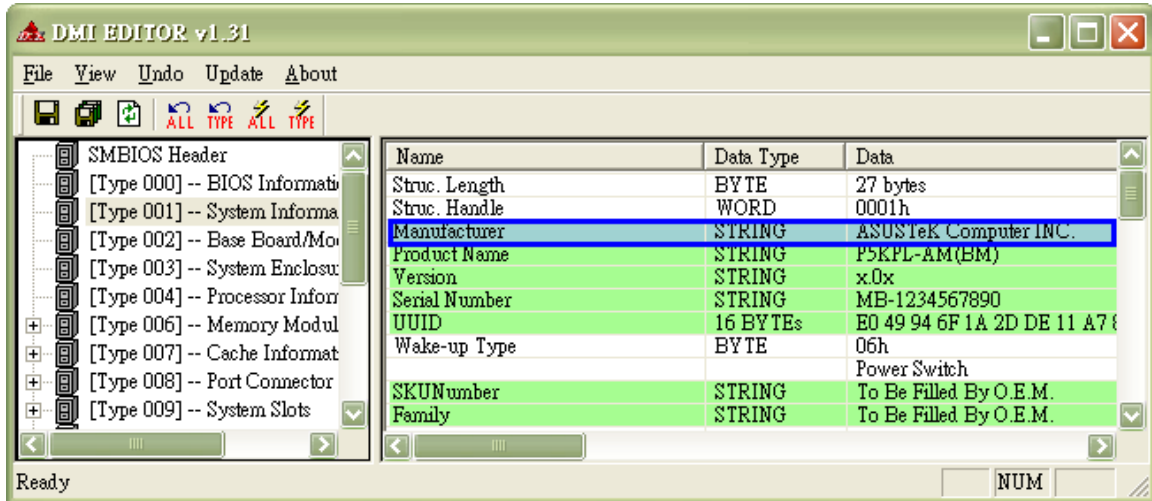
## Updating SMBIOS Type

This function is valid only on AMIBIOS system.

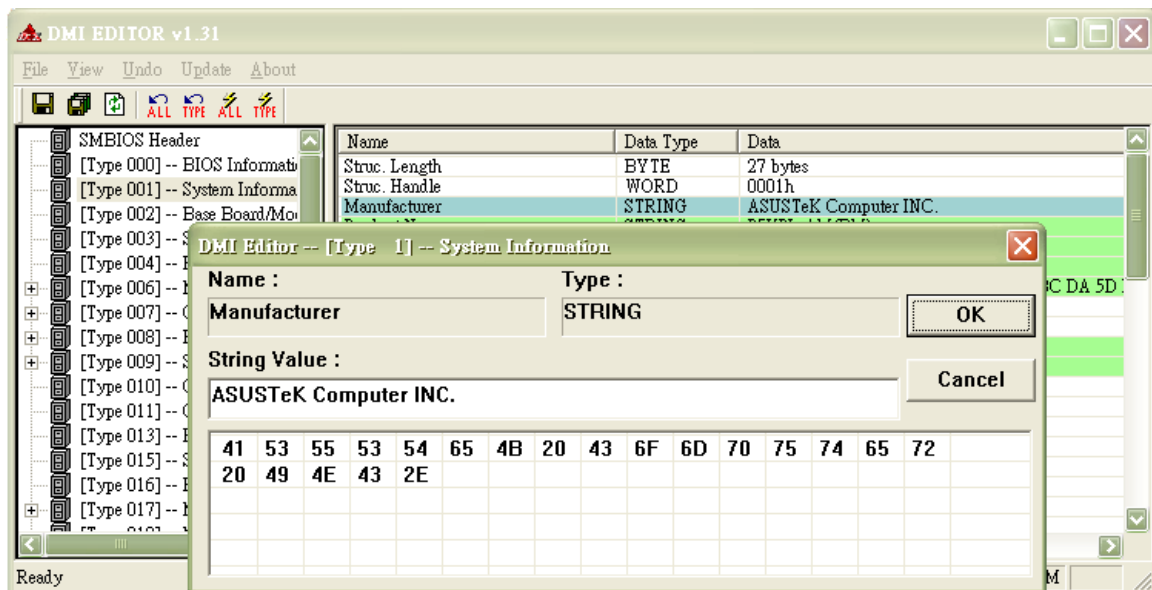
1. As the SMBIOS specification states, not all type can be updated. Therefore, you have to know which types contain editable items.



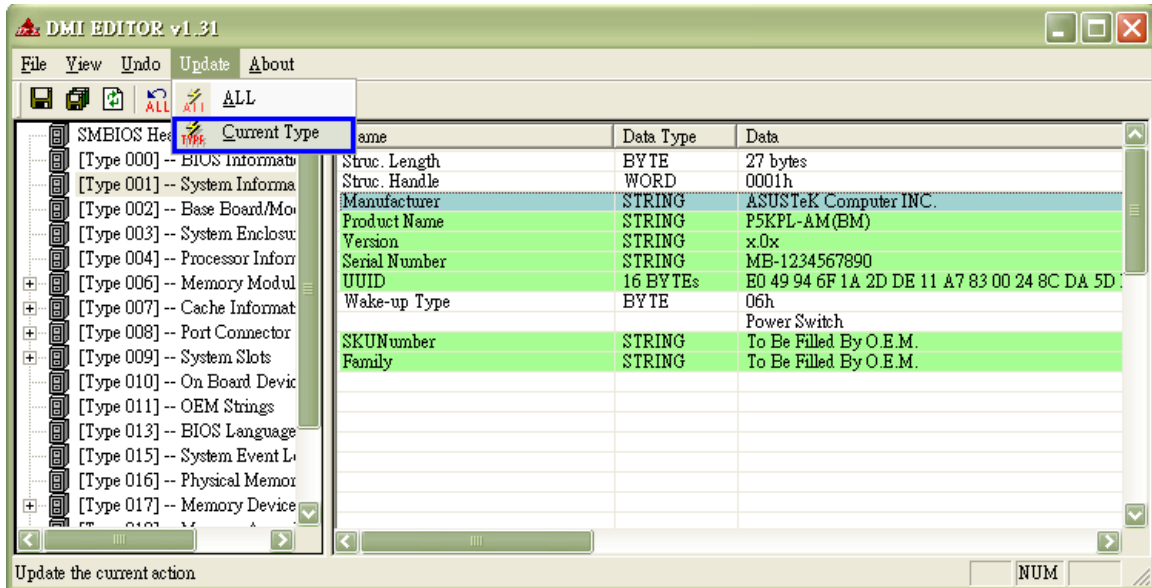
2. Select an item that will be modified.



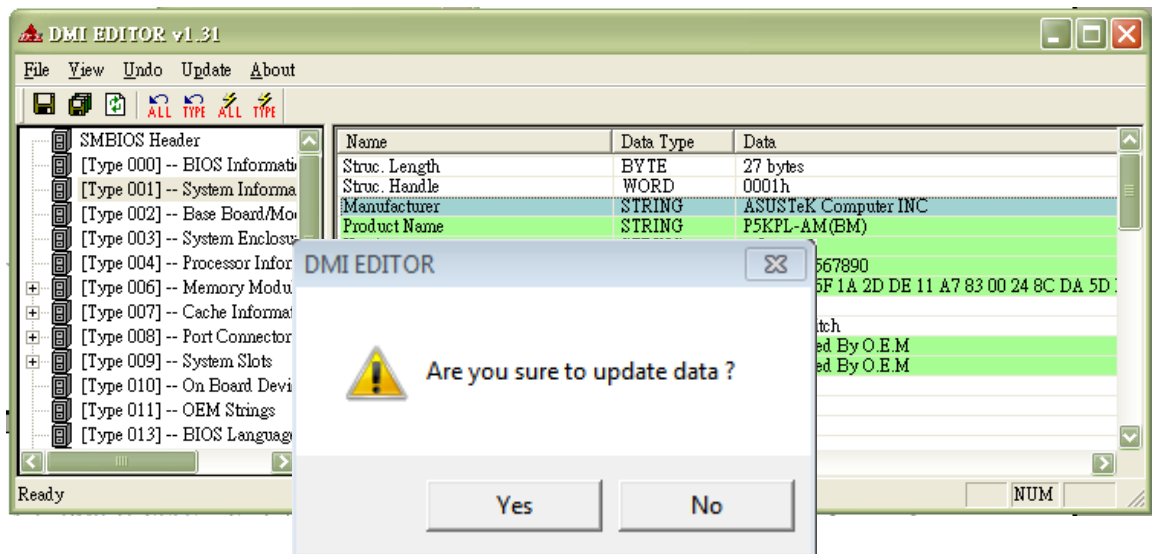
3. Double-click on the item to enter edit dialog box. The dialog box displays the selected item with related information and allows users to modify the value field. After changing the string value, users can press <OK> to submit the change or <Cancel> to ignore the change.



4. Open the Update drop-down menu and select Current Type item or single click the icon on Toolbar.

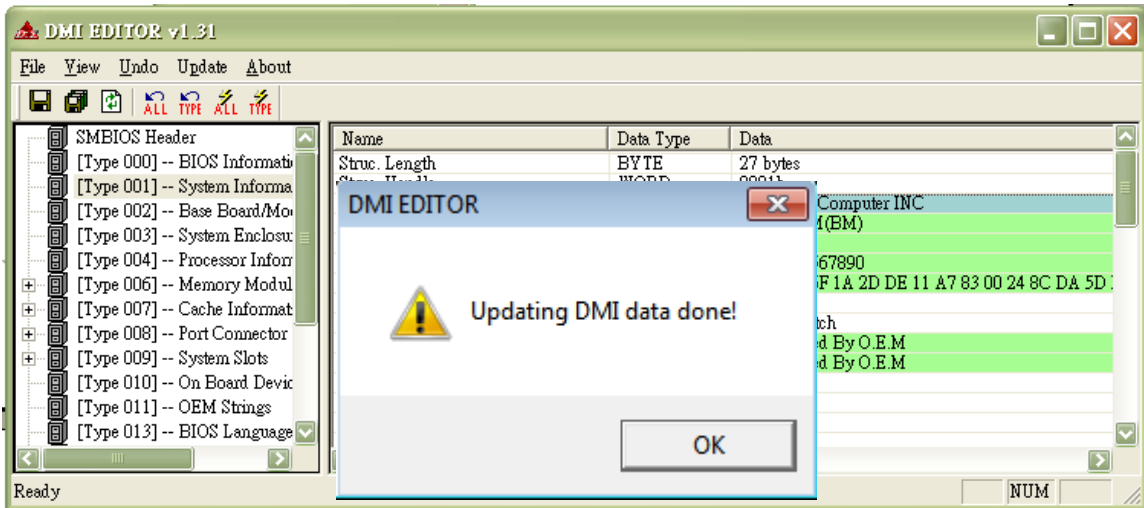


5. Press <Yes> to confirm the update instruction or <No> to ignore.





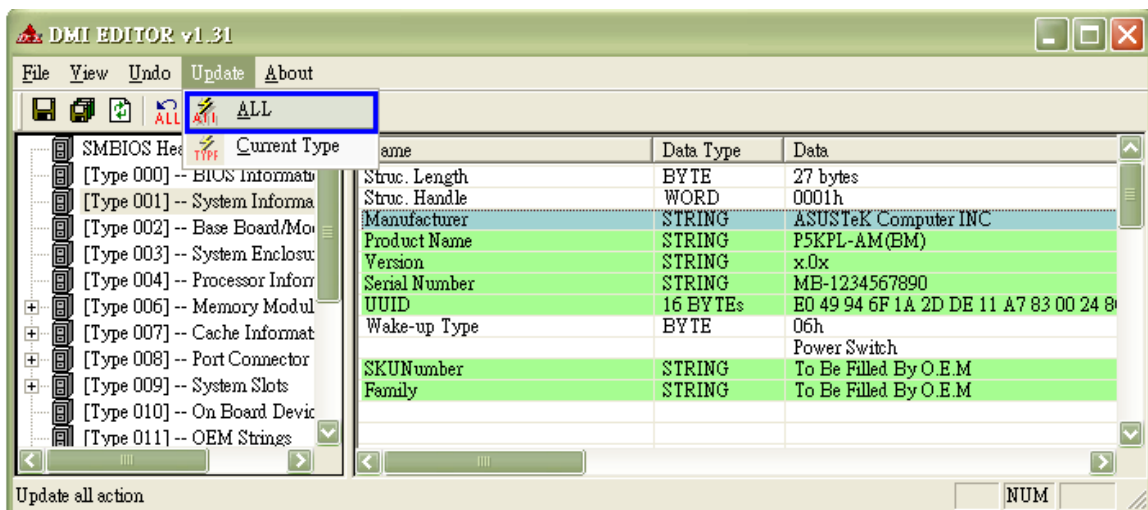
- Now is updating data when the instruction is confirmed.
- Update is done. Users will get the notice dialog box pictured below. Press <OK> to finish the update operation.



### Updating All SMBIOS Types

*This function is valid only on AMIBIOS system.*

- Repeat step.1-3 of Update SMBIOS Type to modify items.
- Open Update drop-down menu and select All or click the <All> icon on Toolbar.

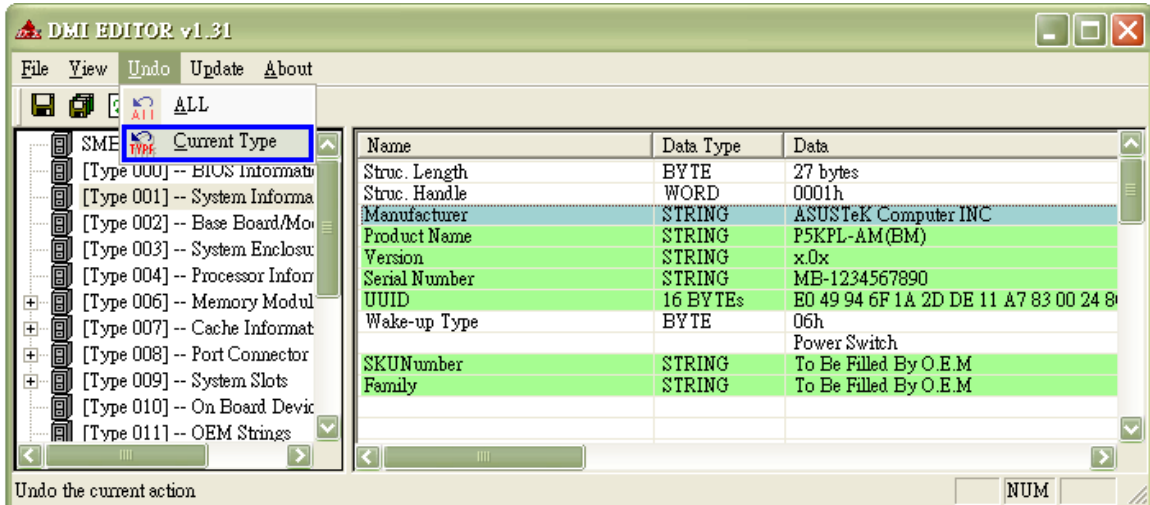


- See steps 5-7 of Update SMBIOS Type to finish the update operation.

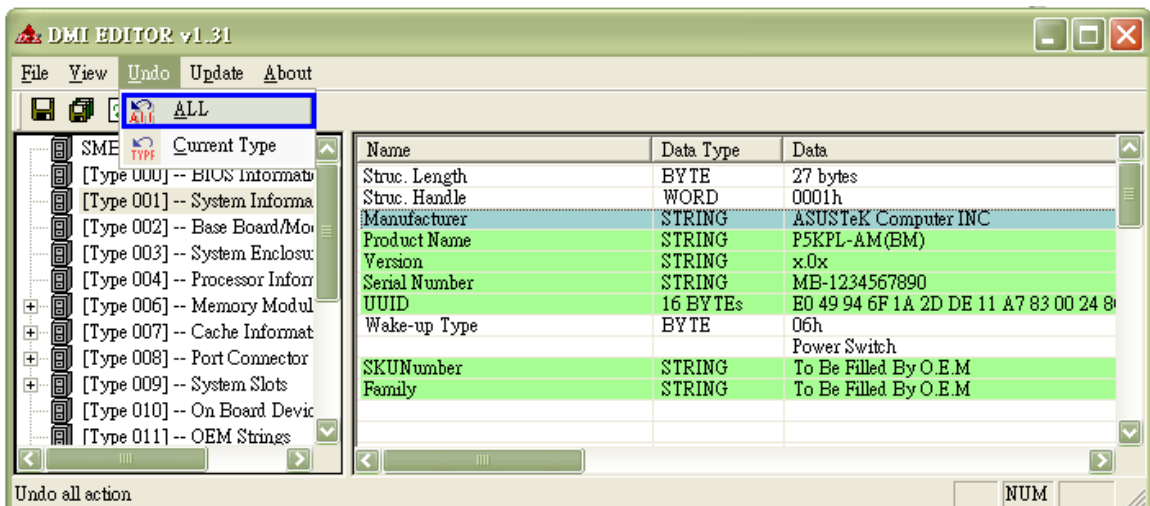


### Undoing Current Type and Undoing All

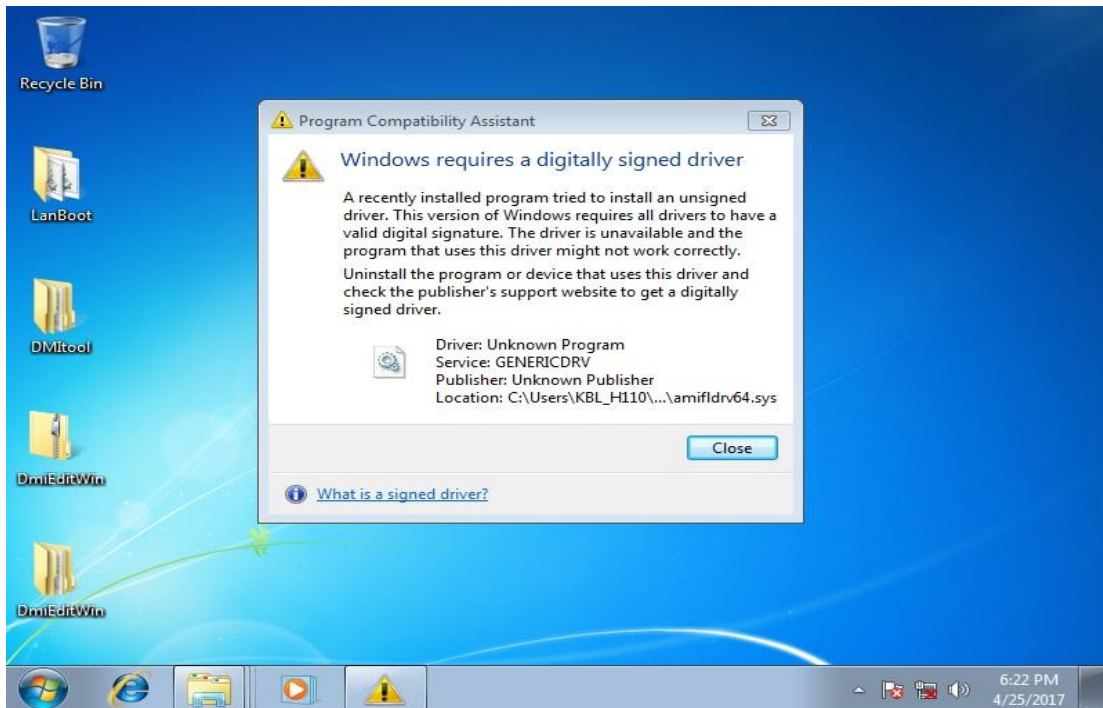
Undo function can restore the original value before users execute the update operation. To undo current type value, open Undo drop-down menu and select Current Type item or click <Type> icon on Toolbar.



To undo all type values, open Undo drop-down menu and select All items Or single click <ALL> icon on Toolbar.



## Windows requires a digitally signed driver



*This issue is resolved by a security fix provided by [MS. KB3033929](#) resolves this issue. The certificate used to sign the driver is higher security and older versions of Win7 don't support it.*