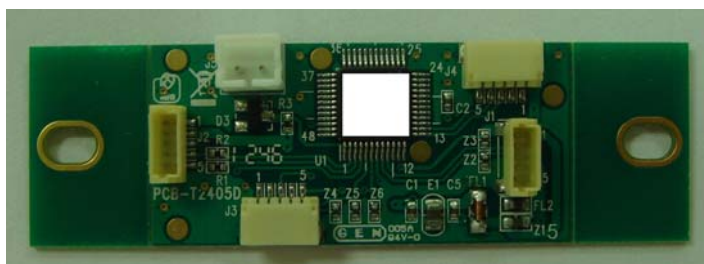


(參考圖片)



FEATURES

Major features of the Decode Board are as follows:

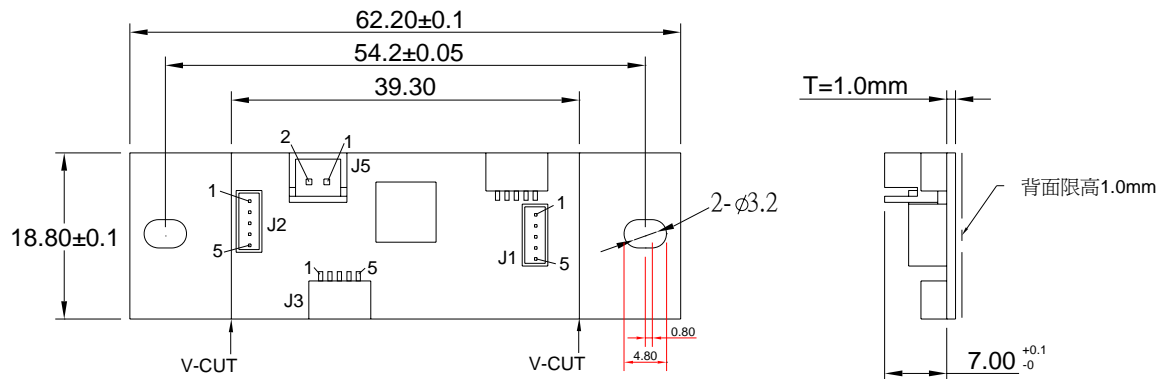
- Support iButton decode.
- No Windows driver needed! Configuration Utility fast and easy to use!
- Powered through the USB interface – no external power supply required.
- Hardware Compatible with PC or any computer or terminal with a USB interfaces.
- Fully Compliant with USB2.0 (Full-speed), on chip USB1.1transceiver
- LED for operating status (available for built-in or external interface connection).
- Buzzer for operating status (available for built-in or external interface connection).

SPECIFICATION

- Reading capabilities: Reads the ID code of all iButtons conforming to Dallas Semiconductor 1-wire protocol.
- **Interface:** USB Virtual COM port (VCP)
- Compatible with USB specification Revision 1.1
- **“Configuration Utility”** Support Microsoft WindowsXP/ Vista / 7/8.
- **Power Supply:** DC 5V, though USB Interface Cable.
- **Dimensions:**
L 62.2.0 x W18.80 x H8.0 mm
- **Lift:**
- Electronics: 125,000 hours.
- **Environment:**
 - Operating Temp: 0 ~ + 55° C
 - Storage Temp: -10 ~ + 55° C
 - Humidity: 10 ~ 90 relative

- ✓ We welcome OEM inquiries
- ✓ Custom device programming is available

I/O Information:



PIN ASSIGNMENTS

	J1	J2	J3	J5
	USB OUTPUT Connection	Indication for external Connection	MSR Shift Out TTL Connection	iButton Connection
Connector	JST SH 1.0mm	JST SH 1.0mm	JST SH 1.0mm	JST PH 2.0mm
Pin Numbers				
1	V Bus (+5V)	RED LED	SHIELD	iButton Data
2	D-	GREEN LED	GND	GND
3	D+	BUZZER	VDD(+3.3V)	
4	GND	+5V	DATA	
5	SHIELD	GND	STROBE	

- ✓ We welcome OEM inquiries
- ✓ Custom device programming is available



Checksum Serial number Family code
6A00000187 AD8901
Unique registration number

Each of the 16 characters can be a digit from 0 to 9 or a capital letter from A to F. The ID-code of any Touch Memory Buttons is absolutely unique. Dallas Semiconductor guarantees that no two Touch Memory Buttons will ever be manufactured with the same ID-code. Thus, the Buttons can be used for various automated password entry and in other areas requiring a unique code.

In fact, the 16-character ID-code consists of 3 fields:

Family code	Dallas Semiconductor manufactures more than dozen different Touch Memory models. Each model has a unique family code.
Serial number	This serial number is unique for each and any member of the device family.
CRC	2 control characters, used to verify the correctness of the data.

All together **Unique 16-characters serial number**

All Dallas Semiconductor's Touch Memories, regardless of their type and function have this unique registration number and utilize one single standard protocol for registration number readout. Therefore, you can use the **PA-T2573** to read the registration number of any existing Touch Button.

The **PA-T2573** also allows the user to customize the ID-code output format by programming a Prefix and Postfix strings as well as several other options.

- ✓ We welcome OEM inquiries
- ✓ Custom device programming is available

 **集佳股份有限公司**
GIGA-TMS INC.
臺北縣汐止市康寧街 169 巷 31 號 8 樓

TEL: +886-2-26954214
FAX: +886-2-26954213
e-mail:
sales@gigatms.com.tw
<http://www.gigatms.com.tw>

● Message Format

- **USB interface** (Virtual serial port): USB Driver to create a virtual serial port (RS-232), Programmable baud rate, Half-Duplex, Data bits=8, Parity=None, Stop bits=1, Baud rate=2400~19200 bps (Default: 19200 bps).

The screenshot shows a configuration window for the RS232(UART) interface. It has tabs for Magnetic Card, iButton, and Package. The iButton tab is selected, and within it, the RS232(UART) sub-tab is active. The settings are as follows:

Setting	Value
Baudrate	19200 bps
Parity	None
Data bits	8 data bits
Stop bits	1 stop bit
Handshaking	None

- Software virtual serial port Driver: <http://www.ftdichip.com/Drivers/VCP.htm>

Currently Supported VCP Drivers:

Operating System	Release Date	Processor Architecture						
		x86 (32-bit)	x64 (64-bit)	PPC	ARM	MIPSII	MIPSIV	SH4
Windows*	2014-02-21	2.10.00	2.10.00	-	-	-	-	-
Linux	2009-05-14	1.5.0	1.5.0	-	-	-	-	-
Mac OS X	2012-08-10	2.2.18	2.2.18	2.2.18	-	-	-	-
Windows CE 4.2-5.2**	2012-01-06	1.1.0.20	-	-	1.1.0.20	1.1.0.10	1.1.0.10	1.1.0.10
Windows CE 6.0/7.0	2012-01-06	1.1.0.20 CE 6.0 CAT CE 7.0 CAT	-	-	1.1.0.20 CE 6.0 CAT CE 7.0 CAT	1.1.0.10	1.1.0.10	1.1.0.10

- ✓ We welcome OEM inquiries
- ✓ Custom device programming is available

● Default Setting

General	RS232(UART)	Keyboard
Magnetic Card	iButton	Package
iButton Present ID format: ID Only Release ID format: ID Only Enable iButton: Present iButton Sound: Present ID Start: 1 ID Length: 16	SS: @ ES: ? PS: a RS: u	

General	RS232(UART)	Keyboard
Magnetic Card	iButton	Package
Package Check Mode: Check without FS & FE Prefix: Suffix:	FS: None Error: None FE: None Check: None FE0: None FE1: None	TK1: TK2: TK3: iButton Present: iButton Release:

iButton data format

PS or RS + **SS** + **DS1990A 48- Bit Serial Number** + **ES**

iButton Present

a + **@** + **ID** + **?**

iButton Release

u + **@** + **ID** + **?**

ASCII	Character	Description	
Hex 40	@	SS	Start Sentinel
Hex 3F	?	ES	End Sentinel
Hex 61	a	PS	iButton present prompt character
Hex 75	u	RS	iButton Release prompt character

- ✓ We welcome OEM inquiries
- ✓ Custom device programming is available